



Annual report of 2019

"SUSTAINABLE SOLUTIONS FOR THE INTERNALLY DISPLACED PERSONS (IDPS) IN THE LOCALITY OF LAHAIE, COMMUNE OF DAME MARIE, GRAND ANSE DEPARTMENT"

Financed by Korea International Cooperation Agency (KOICA)

Period: 1st November 2018-December 31st, 2019

Table of Content

| | |
|---|-----------|
| Table of Content | 2 |
| ACRONYMS | 3 |
| 1. PROJECT SUMMARY | 4 |
| 2. PERFORMANCE REVIEW | 5 |
| 2.1 Monitoring and Evaluation Activities | 5 |
| 2.2 Project Result | 7 |
| 2.3 Performance during the target period | 8 |
| 2.3.1. Key Achievements | 8 |
| 2.3.2. Challenges and Counterplans | 9 |
| 2.4 Achievement(s) in Cross-Cutting Issues | 10 |
| 2.5 Communication and Partnership with KOICA | 10 |
| 2.6 Risk Management | 11 |
| 3. FINANCIAL EXPENDITURE | 11 |
| 3.1 Provisional Financial Expenditure per Activity | 11 |
| 3.2 Annual Work Plan and Budget Allocation for Year N+1 | 13 |
| Annex | 15 |

ACRONYMS

UCLBP: Unité de Logement de Construction et de Bâtiment Public| Housing and Public Building Construction Unit

MTPTC: Ministère des Travaux Publics, Transport et Communication| Ministry of Public Works Transport and Communication

IDPS: Internally Displaced Persons

UNDP: United Nations Development Programme

1. PROJECT SUMMARY (table)

| | | | | |
|---|--|--|--|--|
| Project Title | SUSTAINABLE SOLUTIONS FOR THE INTERNALLY DISPLACED PERSONS (IDPS) IN THE LOCALITY OF LAHAIE, COMMUNE OF DAME MARIE, GRAND ANSE DEPARTMENT | | | |
| Organization | <ul style="list-style-type: none"> United Nations Development Programme UNDP #14, Rue Reimbold, Bourdon, Port-au-Prince, Haïti. Fernando Hiraldo del Castillo, Resident Representative fernando.hiraldo@undp.org +509 48 91 6610/33 20 3579 | | | |
| Date of Submission | December 08, 2017 | | | |
| Target Country | Haiti | | | |
| Project Location | Locality of Lahaie, commune of Dame Marie, Grand'Anse department | | | |
| Beneficiaries | Direct beneficiaries: 400 persons benefit from a sustainable housing solution (100 households) 20 micro-businesses and 5 productive associations benefit from economic recovery activities Indirect beneficiaries: 5638 persons (approximate number of inhabitants from localities of Lahaie and Petite Rivière) | | | |
| Project Period | December 2017 – December 2019 (2 years) with extension to 2021 | | | |
| Goal and Objectives | The goal of the project is to support affected communities in longer-term recovery efforts, ensuring greater resilience to economic shocks, climate and disaster risk. <u>Indicators:</u> Changes in the % of households vulnerable to economic shocks, climate and disaster risks. This project will contribute to the following SDGs: <ul style="list-style-type: none"> • Goal 1. End poverty in all its forms everywhere • Goal 5. Achieve gender equality and empower all women and girls • Goal 8. Promote sustained, inclusive and sustainable economic growth, full and productive employment and decent work for all • Goal 10. Reduce inequality within and among countries • Goal 11. Make cities and human settlements inclusive, safe, resilient and sustainable • Goal 13. Take urgent action to combat climate change and its impacts • Goal 17. Strengthen the means of implementation and revitalize the global partnership for sustainable development | | | |
| Project Budget | Total Cost: 2,953,378.82 USD <ul style="list-style-type: none"> • KOICA Contribution: 2,480,578.82 USD with an extension cost:1,650,500.00 USD • UNDP Contribution: 322,800.00 USD • UCLBP Contribution: 150,000.00 USD | | | |
| Plan for Monitoring and Evaluation | In accordance with UNDP program, a bimonthly internal monitoring is put in place and UNDP sends to KOICA activity's reports according to the schedule below: <ul style="list-style-type: none"> • A biannual report at 30 June of each year. • An annual narrative and financial report as at 30 November of each year. • A synthesis report at the end of the project. Within 180 days from the end of the project | | | |
| Changes of the plan | # | Type | Reporting Period | Due Date |
| | 1 | Biannual Update | Dec. 8 th , 2017 - May 31 st , 2018 | Jun. 30 th , 2018 (<i>Done</i>) |
| | 2 | Annual Report | Dec. 8 th , 2017-Oct. 31 st , 2018 | Nov. 30 th , 2018 (<i>Done</i>) |
| | 3 | Biannual Update | Nov. 1 st , 2018-May 31 st , 2019 | Jun. 30 th , 2019 (<i>Done</i>) |
| | 4 | Annual Report | Nov. 1 st , 2018 - Dec. 31 th , 2019 | Jan. 31 th 2020 |
| 5 | Biannual Update | Jan. 1 st , 2020-Jun. 30 th , 2020 | Jul. 30 th 2020 | |

| | | | | |
|--|----------|------------------|--|---|
| | 6 | Annual Report | Jan. 1 st , 2020 - Dec. 31 th , 2020 | Jan. 31 th 2021 |
| | 7 | Synthesis Report | Dec. 8 th , 2017 - End of the Project | Within 180 days from the end of the Project |

2. PERFORMANCE REVIEW

2.1 Monitoring and Evaluation Activities

| | activities | Details |
|---|--|--|
| History (dates / periods of main activities implemented) Period: 1st November 2018- December 31, 2019 | 1.1.1: A census of internally displaced persons originating from Lahaie community and a baseline survey is conducted | <ol style="list-style-type: none"> 1) A solid baseline with socio – economic data has been developed based on a survey conducted by an expert. 2) UNDP provided legal technical support to the City Council of Dame Marie in the process of purchasing the land and for enhancing accountability and transparency. 3) A proposal of agreement to identify the responsibilities of each partner has been elaborated, considering the inputs given by the community and Dame Marie local authorities. 4) With the support of the legal expert, on April 15, 2019, Dame Marie City Council published a decree declaring the land of public utility in the newspaper Le Nouvelliste to address and overcome the problem of funds and land conflicts.¹ |
| | 1.1.2: Existence of a list of beneficiaries established with the City Council | <ol style="list-style-type: none"> 1) Based on the project baseline, the final list of 100 households' beneficiaries has been established, validated by the local authorities (Dame Marie town hall and the CASEC).² 2) A contract between the Town Hall of Dame Marie and the 100 beneficiary families is being finalized for signature in 2020. |
| | 1.1.3: The soil studies including mitigation actions recommendations, development plan and parcel subdivision plan are carried out in partnership with the communities | <ol style="list-style-type: none"> 1) The UNDP team submitted the report of the development and subdivision plan to the Grand'Anse departmental director of MTPTC in order to obtain the legal subdivision permit on May 28, 2019. 2) UNDP is currently recruiting an expert to conduct an environmental impact study in early 2020. |
| | 2.1.1: The construction of straw huts for catering, selling and storage is completed in the community of Lahaie (seashore area) | <ol style="list-style-type: none"> 1) The project's team has developed a housing model final based on the conceptual framework of housing defined by the UNDP and the Haitian government.³ 2) The technical documents and the bill of quantity (BoQ) for the launch of tenders for the construction of housing are finalized and submitted to UCLBP. |

¹ <https://www.dropbox.com/s/y9utp5ejlkgh2hz/D%C3%A9claration%20d%27utilit%C3%A9%20publique.pdf?dl=0>

² <https://www.dropbox.com/s/drot9wkr4enyb6/4.-Rapport%20liste%20Benef.pdf?dl=0>

³ https://www.dropbox.com/s/h0m88i02siscepo/5.-Rapport%20Modele%20Maison_Lahaie.pdf?dl=0

| | <p>Awareness raising activities and presentation of the project to the 30th celebration of the locality of Lahaie.</p> | <p>At the end of this activity, the following results were achieved:</p> <ul style="list-style-type: none"> - A press release is published⁴; - Communication media including photos, testimonials and content to share with the lessor are collected; - The appropriation of the project by the inhabitants and the re-establishment of the beneficiaries' confidence in the UNDP and the KOICA; - The resolution taken by the people of the community to no longer cut the trees on the relocation site and no longer sell the sand on the coast. <p>3) The number of people has not been determined because this annual celebration brings together people in the 12 municipalities and tourists nationally and internationally</p> | | | | | | | | | | | | | | | | | | |
|--|--|---|--|--|--|--------------------|-----------------|------------|---------------------------|----|----|----------------|----|----|-------------------|----|----|---------------------------|----|----|
| | <p>Creation of the Lahaie Management Platform / Association</p> | <p>To ensure the sustainability of the project's achievements, a management association is created for the management of housing in collaboration with the local authorities and the beneficiary population.</p> <p>Overall, the objective of the platform is to</p> <ul style="list-style-type: none"> - Sensitize, mobilize the community, the actors - Inform the community on the evolution and the change of the project activities. - Participate in securing construction sites; - Ensure the sustainability of the village at the end of the project; - Reinforce the security of the installations; - Ensure sanitation, cleaning and maintenance of the space; <p>The idea of involving the stakeholders of the Lahaie community in the entire implementation of the project and giving them the means to take over and manage the village at the end of the project.</p> <p>The association/platform is made up of the population benefiting from the project, including executives of local communities (Town Hall, CASEC, ASEC), groups, basic organizations, associations, sectors (women, young people, disabled group, fishing group, agricultural, religious, sport) and notable in the region.</p> <table border="1" data-bbox="799 1423 1458 1717"> <thead> <tr> <th colspan="3">Representation of sectors⁵</th> </tr> <tr> <th>Represented sector</th> <th>Number of women</th> <th>Number men</th> </tr> </thead> <tbody> <tr> <td>Notables, deans, religion</td> <td>06</td> <td>16</td> </tr> <tr> <td>Women grouping</td> <td>33</td> <td>00</td> </tr> <tr> <td>Handicap grouping</td> <td>04</td> <td>07</td> </tr> <tr> <td>Laye an anksyon (basic or</td> <td>03</td> <td>10</td> </tr> </tbody> </table> | Representation of sectors⁵ | | | Represented sector | Number of women | Number men | Notables, deans, religion | 06 | 16 | Women grouping | 33 | 00 | Handicap grouping | 04 | 07 | Laye an anksyon (basic or | 03 | 10 |
| Representation of sectors⁵ | | | | | | | | | | | | | | | | | | | | |
| Represented sector | Number of women | Number men | | | | | | | | | | | | | | | | | | |
| Notables, deans, religion | 06 | 16 | | | | | | | | | | | | | | | | | | |
| Women grouping | 33 | 00 | | | | | | | | | | | | | | | | | | |
| Handicap grouping | 04 | 07 | | | | | | | | | | | | | | | | | | |
| Laye an anksyon (basic or | 03 | 10 | | | | | | | | | | | | | | | | | | |

⁴ <https://lenouvelliste.com/article/206848/koica-finance-la-construction-dun-village-de-100-maisons-a-lahaie>

⁵ See the describing chart of representation of sectors average. |page 21

| | | | | |
|--|--|---------------|----|----|
| | | ganization) | | |
| | | Fishing group | 00 | 20 |
| | | Youth group | 12 | 18 |
| | | Total | 58 | 71 |

2.2 Project Result (table)

| Outcome 1 | | Indicator 1.1 | Baseline | Target | Planned Target (Year 2019) | Actual Performance (%) (2019) | Cumulative Performance (1 st Year- Year2019) |
|--|---|---|----------|--------|----------------------------|------------------------------------|--|
| The residents of Lahaie who were affected by hurricane Matthew benefit from improved living conditions physical and economic | | Proportion of community of Lahaie benefiting from better physical living conditions | 0 | 60% | 2018-2019 | 26.80% | 26.80% ⁶ |
| Output 1.1 | Activity 1.1.1 | Indicator 1.1.1 | Baseline | Target | Planned Target (Year 2019) | Actual Performance (%) (2019) | Cumulative Performance (1 st Year- Year 2019) |
| Legal, technical & administrative preparation of the project is completed | Technical support is given to the city council to define the land tenure status, implement fair management mechanisms with the community and enhance accountability and transparency. | The level of project stakeholders' satisfaction on the mechanism | 0 | 85% | 2018-2019 | 75% | 75% |
| | Activity 1.1.2 | Indicator 1.1.2 | Baseline | Target | Planned Target (Year 2019) | Actual Performance (%) (Year 2019) | Cumulative Performance (1 st Year- Year 2019) |
| | A census of internally displaced persons originated from Lahaie and a baseline survey is conducted | Existence of a list of beneficiaries established with the City Council | 0 | 1 | 2019 | 100% | 100% |
| | Activity 1.1.3 | Indicator 1.1.3 | Baseline | Target | Planned Target (Year 2019) | Actual Performance (%) (Year 2019) | Cumulative Performance (1 st Year- Year 2019) |
| | The soil studies including mitigation actions recommendations, development plan and parcel subdivision plan are carried out in partnership with the communities | Ratio of the mitigation Measures established against the risks analyzed | 0 | 100% | 2018 | 100% | 100% |
| Output 2.1 | Activity 2.1.1 | Indicator 2.1.1 | Baseline | Target | Planned Target (Year 2019) | Actual Performance (%) (Year 2019) | Cumulative Performance (1 st Year- Year 2019) |

⁶ Percentage of achievement on all activities: $(350\% \times 60\%) \div (785\%) = 26.75\% \cong 26.80\%$.

| | | | | | | | |
|---|---|--|----------|--|----------------------------|------------------------------------|--|
| Physical rehabilitation of sites is completed with the involvement of local companies and in consultation with the local community. | The construction work is completed in the relocating area including site development, mitigation actions, construction of housing units and basic services infrastructures. | Number of households benefiting from a sustainable housing solution. | 0 | 100 | 2019-2020 | 0 | 25% ⁷ |
| | Activity 2.1.2 | Indicator 2.1.2 | Baseline | Target | Planned Target (Year 2019) | Actual Performance (%) (Year 2019) | Cumulative Performance (1 st Year- Year 2019) |
| | The construction of straw huts for catering, selling and storage is completed in the community of Lahaie (seashore area) | Number of households benefiting from a straw hut. | 0 | 20 | 2020 | 0% | 0% |
| Output 3.1 | Activity 3.1.1 | Indicator 3.1.1 | Baseline | Target | Planned Target (Year 2019) | Actual Performance (%) (Year 2019) | Cumulative Performance (1 st Year- Year 2019) |
| Lahaie and Petite Rivière's income-generating activities are created or reinforced | A territorial diagnostic listing main productive activities, micro businesses existence and potential new activities and market is done. | Total # of micro-businesses benefiting from technical, financial and in-kind support (disaggregated by sex of owner) | 0 | 5 productive associations 20 micro businesses | 2020 | 50% | 50% |
| | Activity 3.1.2 | Indicator 3.1.2 | Baseline | Target | Planned Target (Year 2019) | Actual Performance (%) (Year 2019) | Cumulative Performance (1 st Year- Year 2019) |
| | Technical assistance to improve management skills | Number of economic activities supported with technical assistance. | 0 | 5 productive associations 20 micro businesses | 2020 | 0% | 0% |
| | Activity 3.1.3 | Indicator 3.1.3 | Baseline | Target | Planned Target (Year 2019) | Actual Performance (%) (Year 2019) | Cumulative Performance (1 st Year- Year 2019) |
| | Number of microbusinesses and productive associations receiving equipment | Number of microbusinesses and productive associations receiving equipment | 0 | 25 | 2020 | 0% | 0% |

2.3 Performance during the target period (2018.11.1st.-2019.12.31.)

2.3.1. Key Achievements

⁷ These 25% correspond to the final realization of the house model, technical documents and BoQ for the launch of the tender for the construction of housing.

| Activity 1.1.1 | Actual Performance (%) (Year N) | Key Achievements |
|---|---------------------------------|--|
| Technical support is given to the city council to define the land tenure status, implement fair management mechanisms with the community and enhance accountability and transparency. | 75% | The council has proceeded to the expropriation of the land according to Haitian law for public interest with a fair compensation for the landowner. With the support of the legal expert, on April 15, 2019, Dame Marie City Council published a decree declaring the land of public utility in the newspaper Le Nouvelliste to address and overcome the problem of funds and land conflicts. |
| Activity 1.1.2 | Actual Performance (%) (Year N) | Key Achievements |
| A census of internally displaced persons originating from Lahaie and a baseline survey is conducted Existence of a list of beneficiaries established with the City Council | 100% | <ol style="list-style-type: none"> 1) Following the survey results, the number of registered households are 199 for a total of 728 persons including 338 women and 390 men, this gives an average of 3.7 persons per household. Largest households have up to nine (9) members and the smallest ones one person. Households composed of 3 to 7 members are the most numerous and represent 2/3 of all. Based on socio-economic criteria, the final list of 100 households' beneficiaries has been selected including 48 women heads of household and 52 men heads of household for a total of 440 direct beneficiaries including 201 women, most of whom are heads of household corresponding to 45.70% and 239 men corresponding to 54.30%. 2) Awareness raising activities and presentation of the project to the 30th celebration of the locality of Lahaie. 3) The association is created with the participation of the population benefiting from the project, including executives of local communities (Town Hall, CASEC, ASEC), groups, organizations, associations, sectors (women, young people, disabled, fishing, agricultural, religious, sport) and notable in the region. Members of the association are elected by the community. It is divided into six (6) ad hoc committees, these committees will report to the Board of Directors. |

2.3.2. Challenges and Counterplans (by output or activity)

| Activity 1.1.1 | Actual Performance (%) (Year 2019) | Comment |
|---|------------------------------------|---|
| The construction work is completed in the relocating area including site development, mitigation actions, construction of housing units and basic services infrastructures. | 0 | <p>Challenges: To be able to achieve this result, key elements are: The environmental impact study, the completion of the subdivision and mitigation works and the publication of the call for tenders. Technical validation or publication for these elements are ongoing.</p> <p>However, in parallel, the context of the country affected by demonstrations, roadblocks, security problems (February, May and since the end of August) has impacted the projet.</p> <ul style="list-style-type: none"> - Activities of the project, blocked during this period, - Lack of fuel between August and September 2019, has paralyzed the project activities, especially on the field, - For two weeks, the Regional office of UNDP at Jeremie was closed, - Difficulty to make some follow-up with the partners (MPCE and UCLBP). Because of the government which generates changes interlocutors, |

| | | |
|--|--|---|
| | | <ul style="list-style-type: none"> - The socio-economic situation's crisis in the country has generated inflation which has an impact on the budget: <ul style="list-style-type: none"> • Increase in material prices by more than 75%, • Difficulty finding suppliers who fit into the initial budget. <p>Counterplans:</p> <ul style="list-style-type: none"> - Review priorities and change strategies for activities that do not require government intervention, - Finalization of all documents prior to tenders and take advantage of all opportunities to publish them. - Stay in close contact with state institutions by e-mail and correspondence in order to take advantage of all meeting and document signing opportunities |
|--|--|---|

2.4 Achievement(s) in Cross-Cutting Issues

The promotion of gender equality and the empowerment of women is intrinsic to UNDP's development approach. In focus groups and the project's community workshops, the women are included and actively involved in activities and they are informed at the same level than the men because a special attention has been paid to ensure that each of the activities of this project contributes to UNDP's development approach. The gender mainstreaming is guaranty through all the stages of the project, by ensuring an equal representation of male and female beneficiaries, taking into account women needs in the development of the project, increasing women's participation, decision-making and leadership in project activities; improving women's access to and control over resources and project benefits; and improving the mechanisms through which women and girls can make their voices heard.

Into the list of beneficiaries, 201 women corresponding to 45.70% of the households selected including 48 women heads of household contain at least pregnant or lactating woman and most of these households live below the threshold of 2 USD / day.

Into the Lahaie Management Platform / Association created, 58 women are represented in various sectors of the community, which represents on average 44.96% of the female representation out of 129 members of this association.

Awareness materials were used during community activities. UNDP gender equality and social inclusion expert was present when committees and workshops were set up. Several sessions of exchange and popularization of the project in public places with the notables and the various members of the population were organized where UNDP focused on the participation of women in the realization of the joint activities of the project. The jerseys/T-shirts of the occasion are prepared for the members of the association by inserting the Logos of UNDP and KOICA with the seal of gender equality in this intervention phase. The results are satisfactory, the population expresses its satisfaction and its willingness to participate actively in the smooth running of the project.

2.5 Communication and Partnership with KOICA

An agent of connection is part of the project and ensures the sharing of information between UNDP and KOICA. The liaison officer also provides support for communication between the two offices.

On a regular basis, meetings between the office of UNDP and KOICA are organized to share information and discuss on the progress of the project.

UNDP frequently exchanges e-mail and correspondence with the KOICA office in the Dominican Republic.

2.6 Risk Management

| # | Description | Risk category | Impact & Probability | Mitigation measures |
|---|--|---------------|---|---|
| 1 | <p>The transfer of the land propriety to the city council is not possible</p> <p>The problem of land tenure in Haiti is characterized by the scarcity of land resources, the absence of legal instruments for the management of the territory, which has led to abusive occupations in the domain of the State and private property and the systematic use of expropriation for public utility as the only land policy tool.</p> | Legal | <p>The development of the relocating area won't be possible.</p> <p>P=2 I= 2</p> | <p>The project supports the Mayor of Dame Marie and the beneficiaries targeted with an Expert Legal service's in the acquisition of land for relocation.</p> |
| 2 | <p>Difficulty to find commitment from government for the road and-or land preparation.</p> | Political | <p>The road leading to the relocating area won't be novated</p> <p>I=0 P=2.</p> | <p>The renovation of the road is not a critical aspect of the project. Even if it is not done the project can still be done.</p> <p>Presentation of the project and orientation of the development of the site to the Departmental Director of the Ministry of Public Works Transport and Communication (MTPTC) to involve more actors and initiate the process of building.</p> |
| 3 | <p>Risk that the population make profit by renting the house that are built</p> | Impact | <p>The project won't provide sustainable housing solutions for its beneficiaries</p> <p>P=4 I=4</p> | <p>The selection of beneficiaries with strict targeting criteria will ensure that the most vulnerable population is selected for the project. This risk can also be an opportunity to give flexibility to the beneficiaries to use their houses at their most convenience.</p> <p>The creation of a management committee to ensure / guarantee the sustainability of the project and the respect of the principles of relocation established by the UNDP and the Mayor of Dame Marie.</p> |

3. FINANCIAL EXPENDITURE

3.1 Provisional Financial Expenditure per Activity⁸

| Outcome 1 | Total Budget | Budget planned (Year 2019) | Actual expenditure (Year 2019) (%) | Remarks for reference (ie, Reasons for low/excess rate of expenditure) |
|---|--------------------------------|------------------------------|------------------------------------|--|
| <p>The residents of Lahaie who were affected by hurricane Matthew benefit from improved living conditions physical and economic</p> | <p>2,480,578.82 USD</p> | <p>161,525.91 USD</p> | <p>105,809.24 USD</p> | <p>55,716.67 USD</p> <p>This difference on the 2019 budget are commitments not yet completed which are already carried over to the 2020 budget due to the political problems that we</p> |

⁸ It should be noted that the expense accounts have not yet been closed, the amounts indicated are therefore likely to change in the 2020 biannual report.

| | | | | | experienced in the country during the year of 2019. |
|---|---|------------------|----------------|--------------------|---|
| Output 1.1 | Activity 1.1.1 | Total Budget | Budget planned | Actual expenditure | Remarks for reference |
| Legal, technical & administrative preparation of the project is completed | Technical support is given to the city council to define the land tenure status, implement fair management mechanisms with the community and enhance accountability and transparency. | 527,854.26 USD | 113,410.71 USD | 78,282.19 USD | 35,128.52 USD This difference on the 2019 budget are commitments not yet completed which are already carried over to the 2020 budget due to the political problems that we experienced in the country during the year of 2019. |
| | Activity 1.1.2 | Total Budget | Budget planned | Actual expenditure | Remarks for reference |
| | A census of internally displaced persons originating from Lahaie and a baseline survey is conducted | 70,240.00 USD | 0.00 USD | 0.00 USD | Done |
| | Activity 1.1.3 | Total Budget | Budget planned | Actual expenditure | Remarks for reference |
| | The soil studies including mitigation actions recommendations, development plan and parcel subdivision plan are carried out in partnership with the communities | 174,462.64 USD | 0.00 USD | 27,527.05 USD | Done |
| Output 2.1 | Activity 2.1.1 | Total Budget | Budget planned | Actual expenditure | Remarks for reference |
| Physical rehabilitation of sites is completed with the involvement of local companies and in consultation with the local community. | The construction work is completed in the relocating area including site development, mitigation actions, construction of housing units and basic services infrastructures. | 1,462,444.16 USD | 0.00 USD | 0.00 USD | Planned for 2020-2021 |
| | Activity 2.2.1 | Total Budget | Budget planned | Actual expenditure | Remarks for reference |
| | The construction of straw huts for catering, selling and storage is completed in the community of Lahaie (seashore area) | 94,720.00 USD | 49,115.2 USD | 0.00 USD | 94,720.00 USD Planned for 2020-2021 |
| Output 3.1 | Activity 3.1.1 | Total Budget | Budget planned | Actual expenditure | Remarks for reference |
| Lahaie and Petite Rivière's income-generating activities are created or reinforced | A territorial diagnostic listing main productive activities, micro businesses existence and | 21,740.00 USD | 0.00 USD | 0.00 USD | |

| | | | | |
|---|---------------|----------------|--------------------|-----------------------|
| potential new and market is done. | | | | |
| Activity 3.1.2 | Total Budget | Budget planned | Actual expenditure | Remarks for reference |
| Technical assistance to improve management skills | 61,700.00 USD | 0.00 USD | 0.00 USD | Planned for 2020 |
| Activity 3.1.3 | Total Budget | Budget planned | Actual expenditure | Remarks for reference |
| Number of microbusinesses and productive associations receiving equipment | 67,417.76 USD | 0.00 USD | 0.00 USD | Planned for 2020 |

3.2 Annual Work Plan and Budget Allocation for Year N+1

| Outcome 1 | | Work Plan for (Year N+1) | | | | Total Budget (A) | Cumulative expenditure (2018-2019) (B) | Budget Allocation (2020) (C) | Balance (D=A-B-C) |
|--|---|--------------------------|----|----|----|-------------------------|--|------------------------------|-----------------------|
| The residents of Lahaie who were affected by hurricane Matthew benefit from improved living conditions physical and economic | | 2020 | | | | 2,480,578.82 USD | 372,920.01 USD | 1,176,436.81 USD | 931,222.00 USD |
| Output 1.1 | Activity 1.1.1 | 1Q | 2Q | 3Q | 4Q | Total Budget | Cumulative expenditure | Budget Allocation | Balance |
| Legal, technical & administrative preparation of the project is completed | Technical support is given to the city council to define the land tenure status, implement fair management mechanisms with the community and enhance accountability and transparency. | X | | | | 527,854.27 USD | 106,477.37 USD | 221,376.97 USD | 199,999.92 USD |
| | Activity 1.2.1 | 1Q | 2Q | 3Q | 4Q | Total Budget | Cumulative expenditure | Budget Allocation | Balance |
| | A census of internally displaced persons originating from Lahaie and a baseline survey is conducted | | | | | 70,240.00 USD | 70,240.00 USD | 0.00 USD | 0.00 USD |
| | Activity 1.1.3 | 1Q | 2Q | 3Q | 4Q | Total Budget | Cumulative expenditure | Budget Allocation | Balance |
| | The soil studies including mitigation actions recommendations, development plan and parcel subdivision plan are carried out in partnership with the communities | | | | | 174,462.64 USD | 174,462.64 USD | 0.00 USD | 0.00 USD |
| Output 2.1 | Activity 2.1.1 | 1Q | 2Q | 3Q | 4Q | Total Budget | Cumulative expenditure | Budget Allocation | Balance |

| | | | | | | | | | |
|---|---|----|----|----|----|------------------|------------------------|-------------------|----------------|
| | subdivision plan are carried out in partnership with the communities | | | | | | | | |
| Output 2.1 | Activity 2.1.1 | 1Q | 2Q | 3Q | 4Q | Total Budget | Cumulative expenditure | Budget Allocation | Balance |
| Physical rehabilitation of sites is completed with the involvement of local companies and in consultation with the local community. | The construction work is completed in the relocating area including site development, mitigation actions, construction of housing units and basic services infrastructures. | | X | X | X | 1,462,444.16 USD | 0.00 USD | 731,222.08 USD | 731,222.08 USD |
| | Activity 2.1.2 | 1Q | 2Q | 3Q | 4Q | Total Budget | Cumulative expenditure | Budget Allocation | Balance |
| | The construction of straw huts for catering, selling and storage is completed in the community of Lahaie (seashore area) | | | X | X | 94,720.00 USD | 0.00 USD | 94,720.00 USD | 0.00 USD |
| Output 3.1 | Activity 3.1.1 | 1Q | 2Q | 3Q | 4Q | Total Budget | Cumulative expenditure | Budget Allocation | Balance |
| Lahaie and Petite Rivière's income-generating activities are created or reinforced | A territorial diagnostic listing main productive activities, micro businesses existence and potential new activities and market is done. | X | X | | | 21,740.00 USD | 21,740.00 USD | 00 USD | 0.00 USD |
| | Activity 3.1.2 | 1Q | 2Q | 3Q | 4Q | Total Budget | Cumulative expenditure | Budget Allocation | Balance |
| | Technical assistance to improve management skills | | X | X | | 61,700.00 USD | 0.00 USD | 61,700.00 USD | 0.00 USD |
| | Activity 3.1.3 | 1Q | 2Q | 3Q | 4Q | Total Budget | Cumulative expenditure | Budget Allocation | Balance |
| | Number of microbusinesses and productive associations receiving equipment | | | X | X | 67,417.76 USD | 0.00 USD | 67,417.76 USD | 0.00 USD |

Annex

1. Success stories of activities and(or) beneficiaries
2. Charts, tables and visual aids including photos

- Awareness raising activities and presentation of the project to the 30th celebration of the locality of Lahaie. Implementation:
 - Contextualization for the participants of the Lahaie Housing project in general and of house construction activities.
 - Status of project activities and next steps.
 - Presentation of the process of setting up a platform management committee to ensure the sustainability of the project.
 - Placement of banners and installation of a visibility stand with the UNDP and KOICA logo.
 - Distribution of flyers and T-shirts.
 - Discussion with community members and visitors.
 - Question and answer session with participants.





- To ensure the sustainability of the project's achievements, a management association is created for the management of housing in collaboration with the local authorities and the beneficiary population.

This initiative will inform the indicators of result 1, activity 1.2 of the project which aims to "Create a management platform" to ensure the sustainability of the project and the realization of awareness and mobilization activities on risk management, to ensure good communication and community ownership of the project. In order to integrate the gender and social inclusion aspect, UNDP has prioritized the inclusive participation of the population into the activities.

The association/platform is made up of the population benefiting from the project, including executives of local communities (Town Hall, CASEC, ASEC), groups, organizations, associations, sectors (women, young people, disabled group, fishing group, agricultural, religious, sport) and notable in the region.



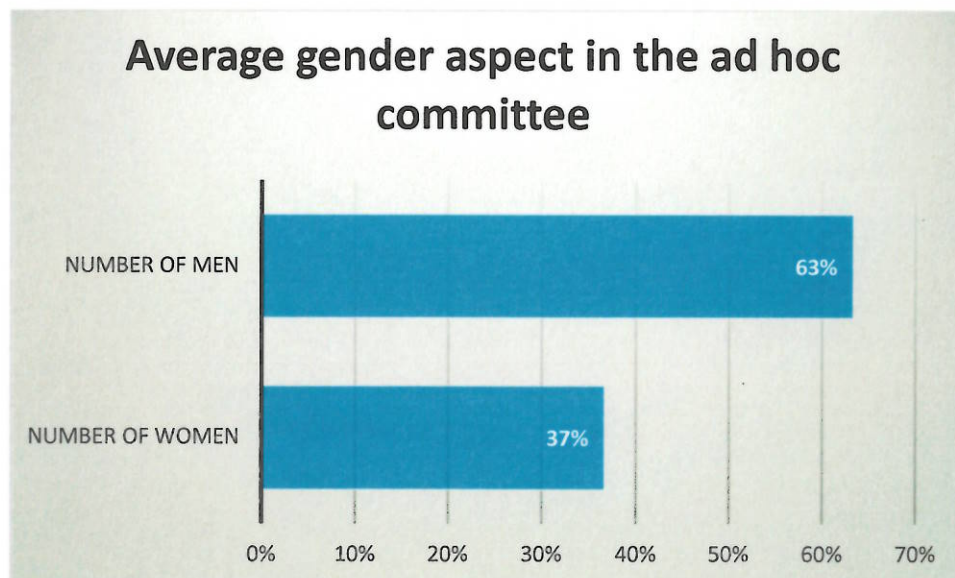


- An election had been organized to elect the members of the board of directors of the management platform:
 - Before the elections, a presentation session had been organized, the 15 participants in the elections spoke to the population where the candidates explained the position for which they applied and to present their source of motivation as a candidate and convince the community of its leadership capacity.
 - The elections were held in the presence of the director of the town hall and the CASEC of the area as key witnesses.

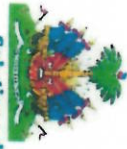
- 143 participants took the time to vote in the elections to elect the administrative council which will constitute 7 members
 - 1 President;
 - 1 Vice-president;
 - 1 Secretary General;
 - 1 Deputy Secretary / delegate;
 - 1 Treasurer;
 - 2 Advisors.
- At the end of the elections 3 Women were elected out of 4 Men (see the results sheet below)

The association/platform is divided into six (6) ad hoc committees, these committees reporting to the Board of Directors.

| Ad hoc committee | Number of Women | Number of Men |
|--------------------------------|-----------------|---------------|
| Security Committee | 1 | 4 |
| Risk management committee | 2 | 3 |
| Sanitation committee | 3 | 2 |
| Touristic committee | 2 | 3 |
| Housing committee | 1 | 4 |
| advisory / executive committee | 2 | 3 |
| Total | 11 | 19 |



Election's results sheet



KOICA
Korea International
Cooperation Agency

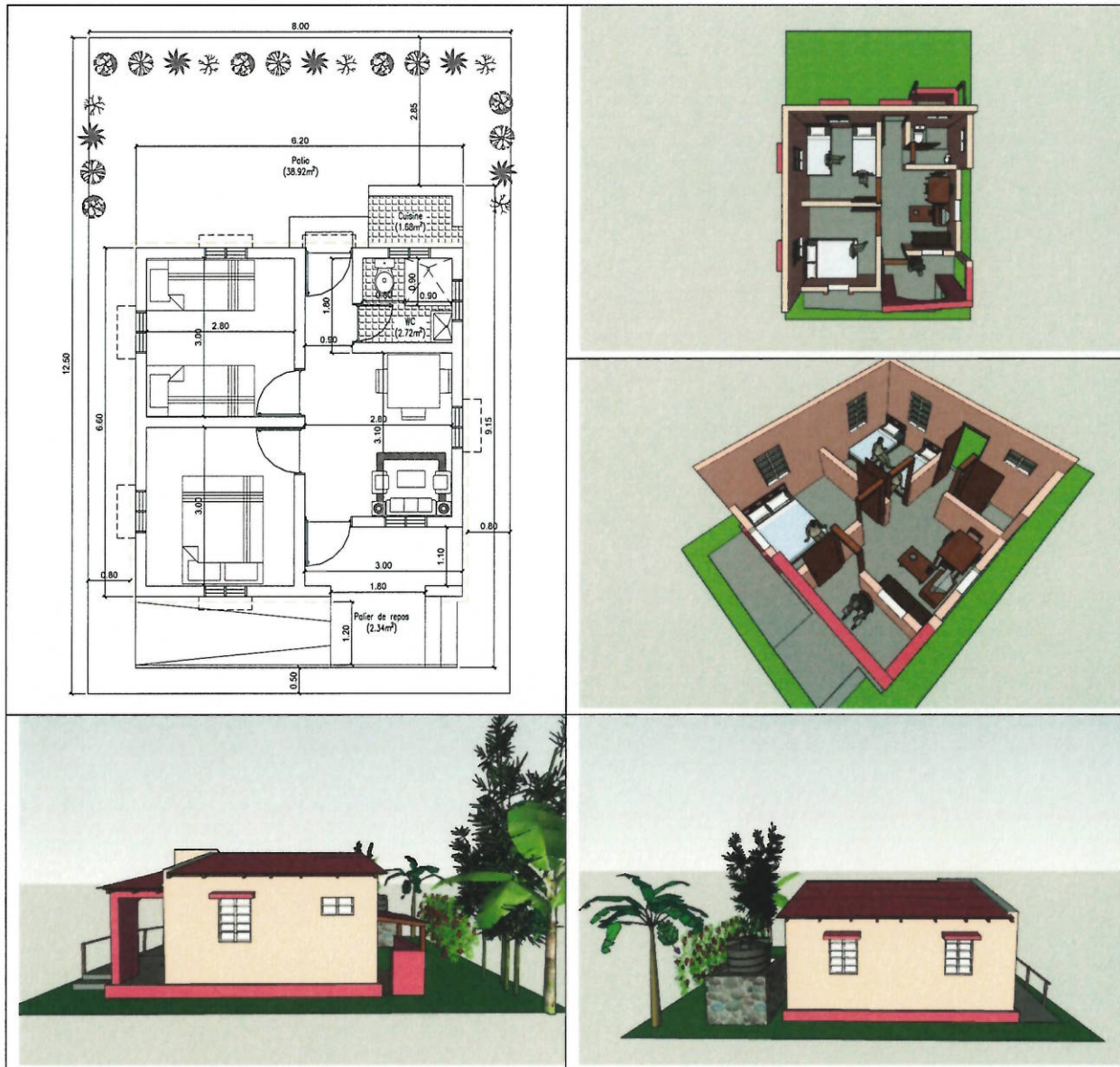
Solutions durables pour les déplacés dans la localité de Lahale, Commune de Dame-Marie, Grand'Anse

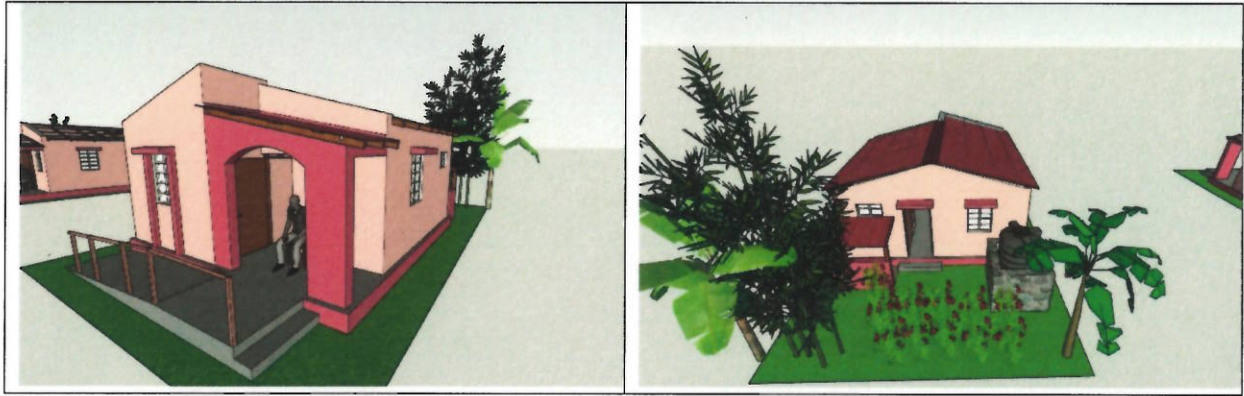
FICHE DES RESULTATS DES ELECTIONS POUR LE CONSEIL D'ADMINISTRATION DE L'ASSOCIATION DE LAHALE



| # | Nom et Prénom des candidats | Président | Vice-Président | Secrétaire général | Secrétaire Adjoint | Trésorier | Conseiller | Poste élu |
|-----|-----------------------------|-----------|----------------|--------------------|--------------------|-----------|------------|---------------------|
| 1. | JOSEPH JOB | 139 | | | | | | Président |
| 2. | DORSAINVILLE Wagnel | | | 49 | | | | |
| 3. | BOISETTE Dieula | | 51 | | | | | Vice-présidente |
| 4. | JEREMY Louidor | | | | | | 65 | Conseiller |
| 5. | SURPRIS Dulson | | | 30 | | | | |
| 6. | CASI Rosemtha | | | | 53 | | | Secrétaire Adjointe |
| 7. | JULES Ghislène | | | | 40 | | | |
| 8. | BELZAIRE Lunique | | 45 | | | | | |
| 9. | SURPRIS Prestilène | | 35 | | | | | |
| 10. | CICERON Nahomie | | | | 20 | | | |
| 11. | ACLUQUE Sainphar | | | | | | 15 | |
| 12. | SYLVAIN Feguens | | | 50 | | | | Secrétaire Général |
| 13. | DENIS Claire-SUZE | | | | | | 4 | |
| 14. | PIERRE Baptiste | | | | | | 34 | Conseiller |
| 15. | MALARY Madelaine | | | | | 140 | | Trésorier |

- The final model of housing Based on the conceptual framework of housing defined by the UNDP and the government.





- Meeting with the local's authorities for validating the final list of beneficiaries' households



- Chart representation of sectors into the Management association/platform, average gender aspect.

